



## 1. Salpa-ancore

# Salpa-ancore Pro-Series + Pro-Fish

### Specifiche

MODEL	MAX.CHAIN		MOTOR SUPPLY	MOTOR POWER	MAXIMUM PULL		WORKING LOAD LIMIT		MAXIMUM LINE SPEED		NORMAL CURRENT DRAW	CIRCUIT BREAKER	WEIGHT	
	mm	in	Voltage	Watt	kg	lb	kg	lb	m/min	ft/min	Amp	Amp	kg	lb
<b>Pro-Series 700</b>	7	1/4	12	500	320	700	79	175	32	105	35	50	8.5	19
<b>Pro-Series 1000</b>	8	5/16	12	700	454	1000	114	250	32	105	50	70	9.5	21
<b>Pro-Fish 700</b>	7	1/4	12	500	320	700	79	175	32	105	35	50	8.5	19
<b>Pro-Fish 1000</b>	8	5/16	12	700	454	1000	114	250	32	105	50	70	9.5	21

### Pro-Series Kit

PART NO.	DESCRIPTION	GYPSY SPECIFICATIONS	
		Chain	Rope
<b>6656011967-310</b>	Pro-Series 700 Kit	6mm DIN 766, 7mm DIN 766, 1/4" ISO G4, 1/4" BBB	12mm (1/2") 3-strand and 8-plait
<b>6657011967-311</b>	Pro-Series 1000, 6-7mm (1/4") Kit	6mm DIN 766, 7mm DIN 766, 1/4" ISO G4, 1/4" BBB	12mm (1/2") 3-strand and 8-plait
<b>6657011198-311</b>	Pro-Series 1000, 8mm (5/16") Kit	8mm DIN 766, 5/16" BBB, 8mm ISO 4565	14-16mm (9/16-5/8") 3-strand and 8-plait (5/8 only)

Il kit comprende: salpa-ancore, perni di fissaggio, guarnizione, attrezzo per installazione, teleruttore, comando da plancia e magneto-termico.

### Pro-Fish Kit

PART NO.	DESCRIPTION	GYPSY SPECIFICATIONS	
		Chain	Rope
<b>6656211967-310</b>	Pro-Fish 700 Kit	6mm DIN 766, 7mm DIN 766, 1/4" ISO G4, 1/4" BBB	12mm (1/2") 3-strand and 8-plait
<b>6656411198-311</b>	Pro-Fish 1000 Kit	8mm DIN 766, 5/16" BBB, 8mm ISO 4565	14-16mm (9/16-5/8") 3-strand and 8-plait (5/8 only)
<b>6656411199-311</b>	Pro-Fish PB	14-16 mm (9/16-5/8") Lead-core line	

Il kit comprende: salpa-ancore, perni di fissaggio, guarnizione, attrezzo per installazione, teleruttore, comando da plancia e magneto-termico.

### Pro-Fish Kit di conversione

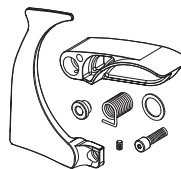
Conversione da Pro-Series a Pro-Fish



PART NO.	DESCRIPTION
<b>66000616</b>	Conversion Kit

### Kit di aggiornamento per Pro-Series e Pro-Fish

Compatibile con tutte le versioni di Pro-Series and Pro-Fish units. Con il barbotin a Ø118mm RC860 è necessario sostituire il barbotin.



PART NO.	DESCRIPTION
<b>66000766</b>	Pro-Series/Fish Rope Guard and Control Arm Upgrade Kit

### Kit Pro-Fish per cima con anima in piombo

per cima da 14 e 16 mm

PART NO.	DESCRIPTION
<b>66000768</b>	Pro-Fish PB Gypsy Kit

### Dimensioni

